

Firmware update

To bring a USB reader into boot loader / configuration mode the following procedure must be used:

Disconnect the USB cable.

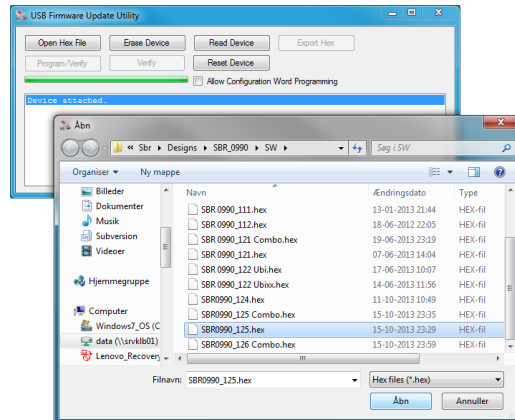
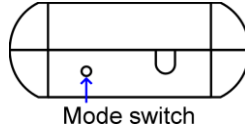
Press and HOLD the mode switch using a paper clip.

Reconnect the USB cable.

The LED will turn red and then yellow.

Release the mode switch.

The USB reader is now in boot loader / configuration mode and will be automatically detected by the SBR Firmware Update Utility – sbrufu.exe



Select firmware file.

Start firmware update process using the 'Program/Verify' button.

To return to normal mode of operation

Disconnect the USB cable.

Reconnect the USB cable.

Firmware	Function	Driver required
SBR0990_1xx	Keyboard emulation	None
SBR0990RW_3xx	Read/Write via virtual COM port	secdc.inf
SBR0990CDC_4xx	ASCII data via virtual COM port	secdc.inf

SECURITY
ENGINEERING

readID™ Mifare®

Configuration guide



©

Security Engineering ApS

readID™ is trademarked by Security Engineering
MIFARE® is registered by NXP Semiconductors

Card data format

The readID Mifare USB reader can read sector data from a NXP Mifare Classic card/tag or Chip Serial Number (UID) from an ISO14443A compatible transponder. Both 4 and 7 byte chip serial number is supported.

Reading Mifare sector data requires knowledge of Sector/Block and matching encryption key.

The readID Mifare USB reader has a range of fixed formats for transmitting CSN/UID data and a field programmable format to handle custom output for CSN/UID or sector data.

Card data formats

Format	ID	Option 1	Option 2
Mifare CSN 32/56 Bit Hex	32	CR	
Mifare CSN Hex Debug	33	CR	
Mifare CSN 32 Bit (HiSec)	41	Tab	
Mifare CSN 32/56 Bit Dec	46	CR	56 Bit
Mifare CSN 32 Bit (ATS)	47	CR	
Mifare CSN 32 Bit Dec Reverse (NXP UID)	49	CR	
Mifare CSN 32 Bit Hex Reverse (NXP UID)	50	CR	
Mifare CSN 32 Bit 8 Digit (Pelco)	51	CR	
Mifare CSN 32 Bit 9 Digit (Pelco)	52	CR	
Mifare CSN 32 Bit Hex (56 Bit will be truncated)	53	CR	
Mifare CSN 56 Bit Dec	55	CR	
Mifare CSN 56 Bit Dec Reverse (NXP UID)	56	CR	
Mifare CSN 56 Bit Hex Reverse - I/Net 7 64 Bit	57	CR	
Mifare CSN 56 Bit Hex Reverse (NXP UID)	58	CR	
Mifare CSN/Sector Programmable Format	63		

The Programmable format is explained in 'USB Configuration Utility Manual'.

Please see <http://www.securityengineering.dk>

Card data format selection

To bring a USB reader into boot loader / configuration mode the following procedure must be used:

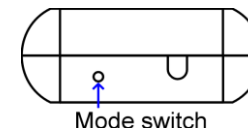
Disconnect the USB cable.

Press and HOLD the mode switch using a paper clip.

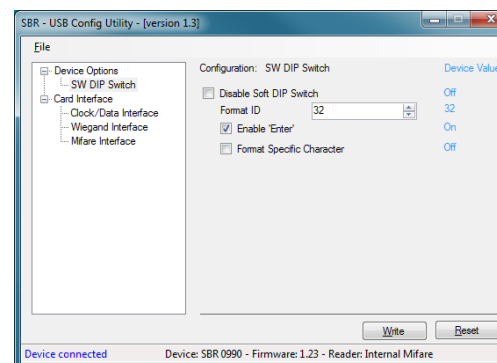
Reconnect the USB cable.

The LED will turn red and then yellow.

Release the mode switch.



The USB reader is now in boot loader / configuration mode and will be automatically detected by the SBR Configuration Utility – sbrucu.exe



Select Format ID and options for Enter/CR at end of transmission and/or Format specific character/setting.

Save format selection by using the 'Write' button.

To return to normal mode of operation

Disconnect the USB cable.

Reconnect the USB cable.