

Firmware update

To bring a USB interface into boot loader / configuration mode the following procedure must be used:

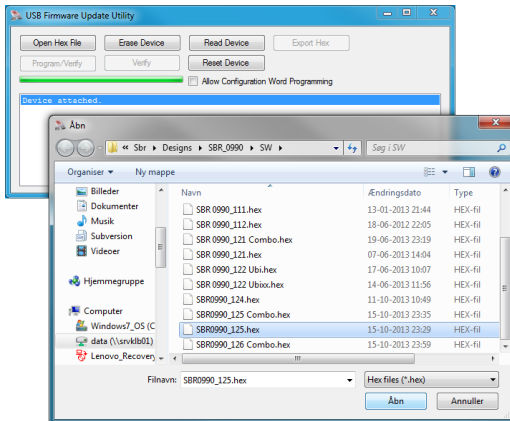
Disconnect the USB cable.

Press and hold the mode switch on the rear side of the reader.

Reconnect the USB cable.

The LED will turn red and then yellow.

The USB interface is now in boot loader / configuration mode and will be automatically detected by the SBR Firmware Update Utility – sbrufu.exe



Select firmware file.

Start firmware update process using the 'Program/Verify' button.

To return to normal mode of operation

Disconnect the USB cable.

Reconnect the USB cable.

Firmware	Function	Driver required
SBR0904USB_w2xx	Wiegand / Keyboard emulation	None
SBR0904USB_w4xx	Wiegand / virtual COM port	secdc.inf

Please see <http://www.securityengineering.dk>

USB Compact Reader

HID Prox

HID iCLASS®

Configuration guide



©

Security Engineering ApS

HID iCLASS® is registered by HID Global

Card data format

The USB Compact Reader reads data in Wiegand format.

The received data is converted depending of the selected card data format, selected by the configuration stored in the EEPROM.

Data can be transmitted as keyboard strokes (USB HID Keyboard) or as ASCII data (USB CDC). Keyboard or Com port emulation is selected by loading the corresponding firmware.

Card data formats

Format	ID	Interface	Option 1	Option 2
Wiegand Raw	32	Wiegand	CR	
Wiegand Raw - Debug	33	Wiegand	CR	
Wiegand 26 Bit (Site + Card no.)	34	Wiegand	CR	
Wiegand 26 Bit (Card no.)	35	Wiegand	CR	
Wiegand 34 Bit (Site + Card no.)	36	Wiegand	CR	
Wiegand 34 Bit (Card no.)	37	Wiegand	CR	
Wiegand 37 Bit (Large card no.)	38	Wiegand	CR	
Wiegand 37 Bit (Site + Card no.)	39	Wiegand	CR	
Wiegand 37 Bit (Card no.)	40	Wiegand	CR	
Wiegand 37 Bit (HiSec)	43	Wiegand	Tab	
Wiegand 32 or 48 Bit (ATS)	47	Wiegand	CR	
Wiegand 27,29,32 Bit (ESMI/Pelco)	51	Wiegand	CR	
Wiegand 27,29,32 Bit (ESMI/Pelco)	52	Wiegand	CR	
Wiegand Programmable Format	63	Wiegand		

The Programmable format is explained in 'USB Configuration Utility Manual'.

For the full list of Card data formats please use link below.

Please see <http://www.securityengineering.dk>

Card data format selection

To bring a USB interface into boot loader / configuration mode the following procedure must be used:

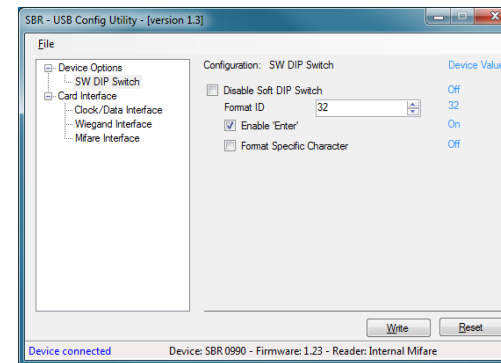
Disconnect the USB cable.

Press and hold the mode switch on the rear side of the reader.

Reconnect the USB cable.

The LED will turn red and then yellow.

The USB reader is now in boot loader / configuration mode and will be automatically detected by the SBR Configuration Utility – sbrucu.exe



Select Format ID and options for Enter/CR at end of transmission and/or Format specific character/setting.

Save format selection by using the 'Write' button.

To return to normal mode of operation

Disconnect the USB cable.

Reconnect the USB cable.