

Firmware update

To bring a RS232 interface into boot loader / configuration mode the following procedure must be used:

Disconnect the RS232 cable.

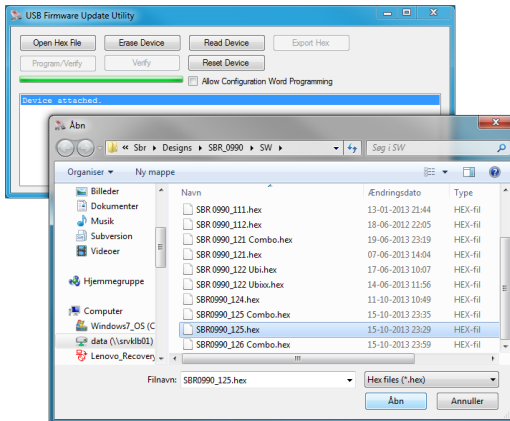
Set DIP switch 8 to ON and the rest to OFF.



Connect the USB cable.

The LED will turn red and then yellow.

The USB interface is now in boot loader / configuration mode and will be automatically detected by the SBR Firmware Update Utility – sbrufu.exe



Select firmware file.

Start firmware update process using the 'Program/Verify' button.

To return to normal mode of operation

Disconnect the USB cable and select correct DIP settings.

Connect the RS232 cable.

Firmware	Function	Driver required
SBR0904SER_w2xx	Wiegand / Serial ASCII	None
SBR0904SER_cd2xx	ClockData / Serial ASCII	None

RS232 Compact Interface

Configuration guide



©

Security Engineering ApS

Card data format

The RS232 Compact Interface can receive data in both Wiegand format and Clock/Data format depending on the loaded firmware.

The received data is converted depending of the selected card data format, set via the DIP switch or configuration stored in the EEPROM. Data is transmitted via the RS232 interface using ASCII encoding of data.

Card data formats

Format	ID	Interface	Option 1	Option 2
Clock / Data Raw	0	Clock / Data	CR	
Clock / Data Programmable	31	Clock / Data		
Wiegand Raw	32	Wiegand	CR	
Wiegand Raw - Debug	33	Wiegand	CR	
Wiegand 26 Bit (Site + Card no.)	34	Wiegand	CR	56 Bit
Wiegand 26 Bit (Card no.)	35	Wiegand	CR	
Wiegand 34 Bit (Site + Card no.)	36	Wiegand	CR	
Wiegand 34 Bit (Card no.)	37	Wiegand	CR	
Wiegand 37 Bit (Large card no.)	38	Wiegand	CR	
Wiegand 37 Bit (Site + Card no.)	39	Wiegand	CR	
Wiegand 37 Bit (Card no.)	40	Wiegand	CR	
Wiegand 26 Bit (Site + Card no.)	34	Wiegand	CR	
Wiegand 32 or 48 Bit (ATS)	47	Wiegand	CR	
Wiegand 27,29,32 Bit (ESMI/Pelco)	51	Wiegand	CR	
Wiegand Programmable Format	63	Wiegand		

The Programmable format is explained in 'USB Configuration Utility Manual'.

For the full list of Card data formats please use link below.

DIP Switch example: ID = 33, CR = On



Card data format selection

To bring a RS232 interface into boot loader / configuration mode the following procedure must be used:

Disconnect the RS232 cable.

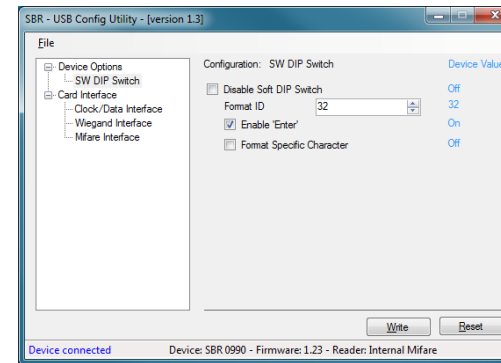
Set DIP switch 8 to ON and the rest to OFF



Connect the USB cable.

The LED will turn red and then yellow.

The USB reader is now in boot loader / configuration mode and is automatically detected by the SBR Configuration Utility – sbrucu.exe



Select Format ID and options for Enter/CR at end of transmission and/or Format specific character/setting.

Save format selection by using the 'Write' button.

To return to normal mode of operation

Disconnect the USB cable and select correct DIP settings.

Connect the RS232 cable.